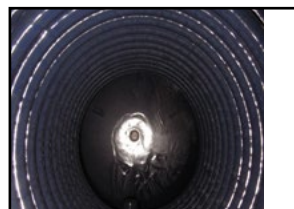


# SFV - Enamelled boiler with a single fixed coil

## DSFV - Enamelled boiler with double fixed coil



Carbon steel enamelled Boiler for the production and storage of Hot Domestic Water equipped with internal fixed coil heat exchanger.



TECHNICAL CHARACTERISTICS

|                          |                                 |   |
|--------------------------|---------------------------------|---|
| Sanitary                 | Material:                       | S 235 Jr enamelled  |
|                          | Internal protective processing: | Inorganic alimentary enamelling (DIN 4753.3)  |
|                          | External protective processing: | Painting with anti rust and industrial glaze  |
|                          | Operation (P max. / T max.):    | 8 bar / 95°C  |
|                          | Cathodic protection:            | Magnesium anode   |
| Upper exchanger (boiler) | Material:                       | S 235 Jr enamelled  |
|                          | Internal protective processing: | Rough   |
|                          | External protective processing: | Inorganic alimentary enamelling (DIN 4753.3)  |
| Lower exchanger (solar)  | Typology:                       | Spiral fixed coil   |
|                          | Operation (P max. / T max.):    | 12 bar / 95°C   |
| General characteristics  | Capacity:                       | 150 - 2000 Lt   |
|                          | Warranty:                       | 5 years   |
|                          | Insulation:                     | - Rigid polyurethane + pvc: <i>Fire resistance class B3 (DIN 4102)</i>  |
|                          |                                 | - Flexible Polyester + pvc: <i>Fire resistance class B2 (DIN4102)</i>   |
|                          | Reference legislation:          | - PED 14/68/UE Art. 4 Par. 3 (Pressure equipment)<br>- M.D. of 6th April 2004 N.174 (suitability of materials in contact with SHW)<br>- Directive 2009/125/CE (Energy related Products) |

FITTINGS  
(pag. 152)



Electronic anode with impressed current



Electronic control unit



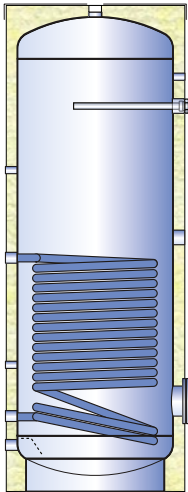
Electrical resistance 1 1/2 connection



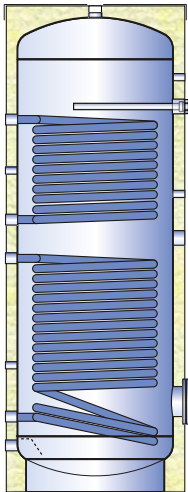
Thermostat



Thermometer

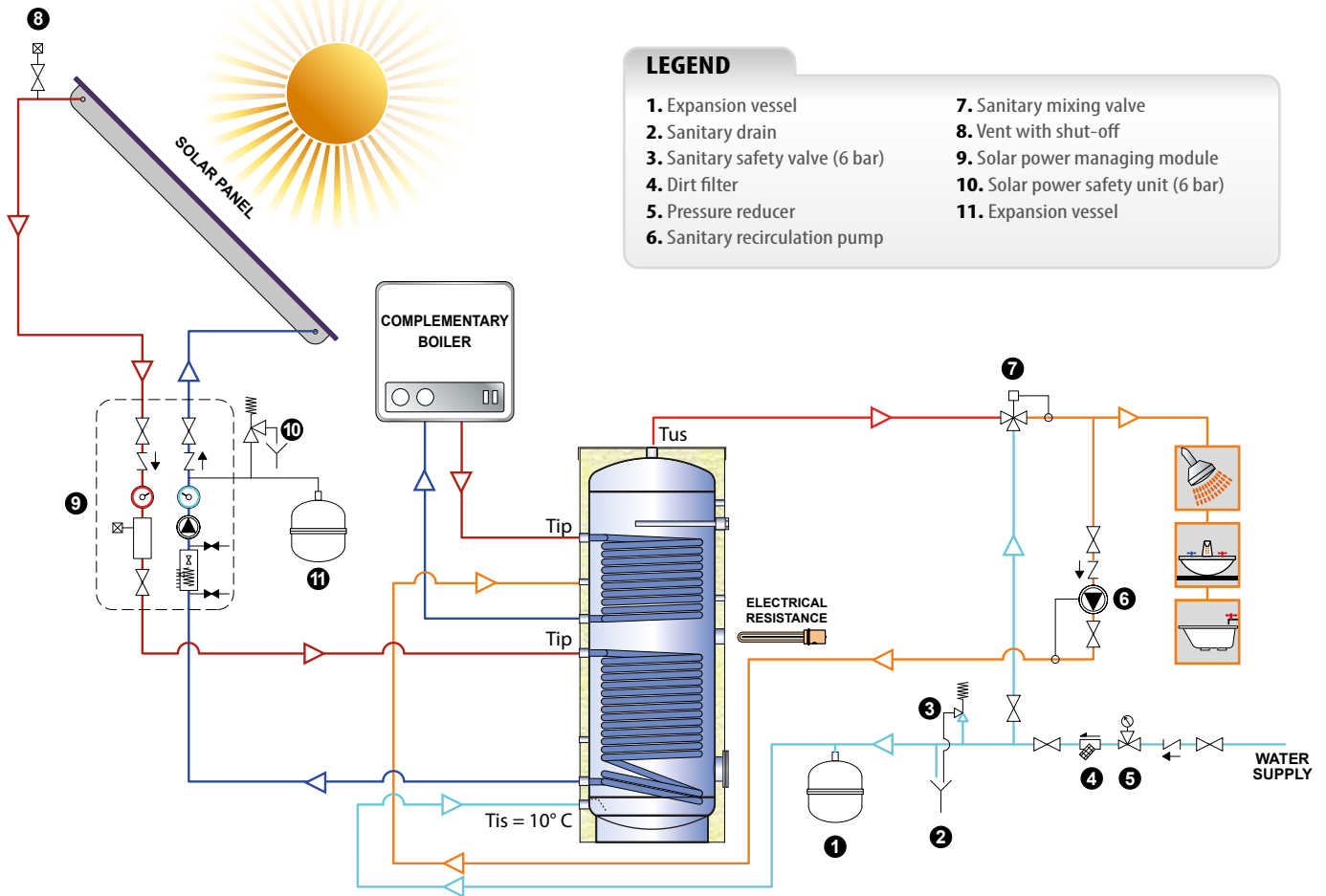


| <b>SFV - Enamelled boiler with a single fixed coil</b> |     |   |                                     |                |     |   |
|--|-----|---|-------------------------------------|----------------|-----|---|
| Flexible polyester insul. 100 mm thick + pvc           |     |   | Rigid Polyurethane insulation + pvc |                |     |   |
| Code   | ErP | € | Code                                | Thickness (mm) | ErP | € |
| -  | -   | - | SFV 00150 R                         | 50             | B   | - |
| -  | -   | - | SFV 00200 R                         | 50             | B   | - |
| -  | -   | - | SFV 00300 R                         | 50             | B   | - |
| -  | -   | - | SFV 00400 R                         | 50             | B   | - |
| -  | -   | - | SFV 00500 R                         | 50             | B   | - |
| SFV 00800 F  | D   | - | SFV 00800 R                         | 100            | C   | - |
| SFV 01000 F  | D   | - | SFV 01000 R                         | 100            | C   | - |
| SFV 01500 F  | D   | - | SFV 01500 R                         | 100            | C   | - |
| SFV 02000 F  | D   | - | SFV 02000 R                         | 100            | C   | - |



| <b>DSFV - Enamelled boiler with double fixed coil</b> |     |   |                                     |                |     |   |
|---|-----|---|-------------------------------------|----------------|-----|---|
| Flexible polyester insul. 100 mm thick + pvc          |     |   | Rigid Polyurethane insulation + pvc |                |     |   |
| Code  | ErP | € | Code                                | Thickness (mm) | ErP | € |
| -   | -   | - | DSFV 00200 R                        | 50             | B   | - |
| -   | -   | - | DSFV 00300 R                        | 50             | B   | - |
| -   | -   | - | DSFV 00400 R                        | 50             | B   | - |
| -   | -   | - | DSFV 00500 R                        | 50             | B   | - |
| DSFV 00800 F  | D   | - | DSFV 00800 R                        | 100            | C   | - |
| DSFV 01000 F  | D   | - | DSFV 01000 R                        | 100            | C   | - |
| DSFV 01500 F  | D   | - | DSFV 01500 R                        | 100            | C   | - |
| DSFV 02000 F  | D   | - | DSFV 02000 R                        | 100            | C   | - |

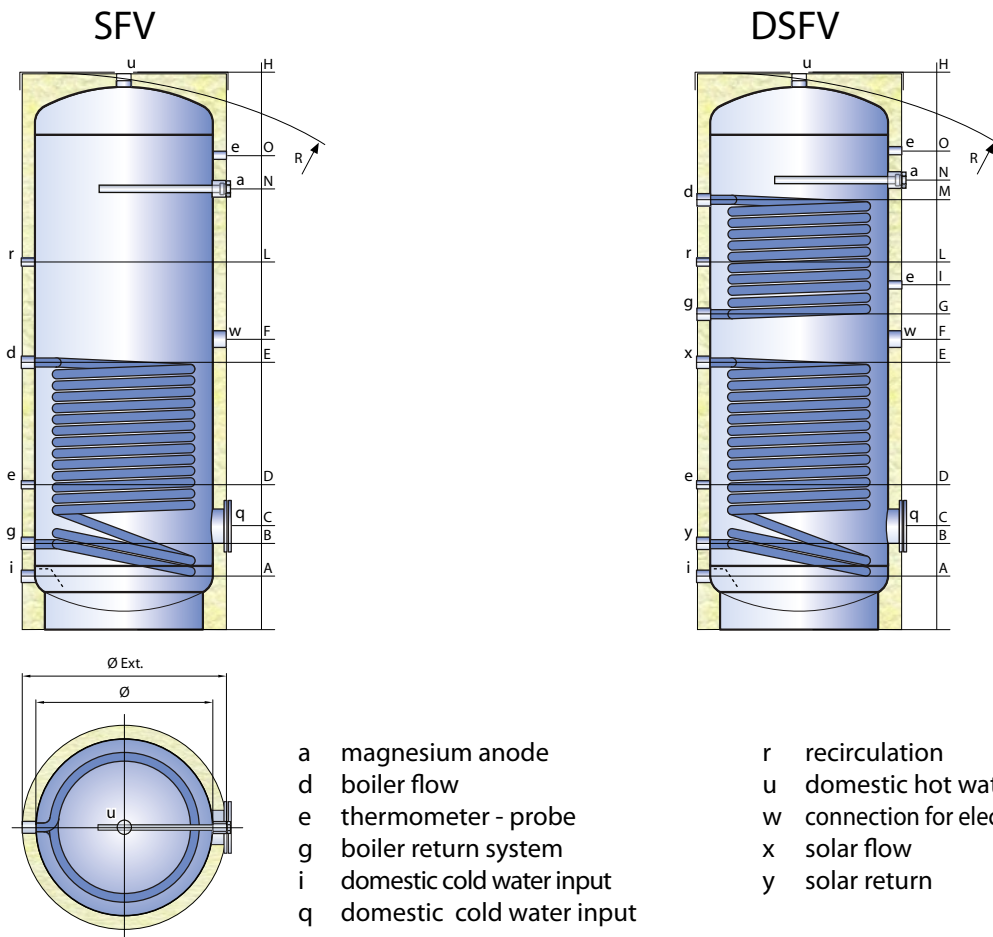
Caution: Indicative Schematic diagram, not substitutive for project work.



| Model       | lower exchanger |            |          |                                  |             |            |             |      | upper exchanger |            |          |                                  |             |            |             |      | Amount of water in the first 10 min (Lt/10') |
|-------------|-----------------|------------|----------|----------------------------------|-------------|------------|-------------|------|-----------------|------------|----------|----------------------------------|-------------|------------|-------------|------|--|
|             | Sq.m. (Lt)      | Lt/h (mca) | Tip (°C) | production of Sanitary Hot Water |             |            |             | NL*  | Sq.m. (Lt)      | Lt/h (mca) | Tip (°C) | production of Sanitary Hot Water |             |            |             | NL*  |  |
|             |                 |            |          | Tus=45°C                         |             | Tus=60°C   |             |      |                 |            |          | Tus=45°C                         |             | Tus=60°C   |             |      |  |
|             |                 |            |          | Power (kW)                       | Flow (Lt/h) | Power (kW) | Flow (Lt/h) |      |                 |            |          | Power (kW)                       | Flow (Lt/h) | Power (kW) | Flow (Lt/h) |      |  |
| SFV 00150R  | 0,85 (6,0)      | 2000 (0,3) | 80       | 25,0                             | 614         | 20,0       | 344         | 2,2  | ---             | ---        | ---      | ---                              | ---         | ---        | ---         | ---  | 280  |
|             |                 |            | 70       | 19,8                             | 487         | 14,2       | 244         |      |                 |            |          |                                  |             |            |             |      | 264  |
| _SFV 00200R | 0,9 (6,4)       | 2000 (0,3) | 80       | 26,5                             | 650         | 21,2       | 365         | 3,5  | 0,5 (3,5)       | 2000 (0,2) | 80       | 15,3                             | 376         | 12,1       | 209         | 1,2  | 347  |
|             |                 |            | 70       | 21,0                             | 516         | 14,9       | 256         |      |                 |            | 70       | 12,1                             | 298         | 8,6        | 148         |      | 332  |
| _SFV 00300R | 1,3 (9,2)       | 2000 (0,4) | 80       | 36,6                             | 900         | 29,4       | 506         | 7,8  | 0,85 (6,0)      | 2000 (0,3) | 80       | 25,0                             | 614         | 20,0       | 344         | 2,0  | 497  |
|             |                 |            | 70       | 29,1                             | 715         | 20,9       | 360         |      |                 |            | 70       | 19,8                             | 487         | 14,2       | 244         |      | 479  |
| _SFV 00400R | 1,6 (11,3)      | 3000 (1,1) | 80       | 46,1                             | 1132        | 37,1       | 638         | 12,2 | 0,9 (6,4)       | 3000 (0,6) | 80       | 27,3                             | 670         | 21,7       | 373         | 3,4  | 654  |
|             |                 |            | 70       | 36,6                             | 899         | 26,1       | 449         |      |                 |            | 70       | 21,6                             | 531         | 15,3       | 264         |      | 631  |
| _SFV 00500R | 1,95 (13,8)     | 3000 (1,4) | 80       | 55,0                             | 1351        | 44,1       | 759         | 18,1 | 1,1 (7,8)       | 3000 (0,8) | 80       | 32,7                             | 802         | 26,3       | 453         | 5,2  | 805  |
|             |                 |            | 70       | 43,7                             | 1073        | 31,4       | 540         |      |                 |            | 70       | 26,2                             | 643         | 18,5       | 318         |      | 779  |
| _SFV 00800_ | 2,7 (19,2)      | 3000 (1,9) | 80       | 71,9                             | 1767        | 58,6       | 1008        | 22,0 | 1,5 (10,6)      | 3000 (1,1) | 80       | 43,6                             | 1072        | 34,8       | 598         | 7,4  | 1239   |
|             |                 |            | 70       | 57,9                             | 1422        | 41,8       | 719         |      |                 |            | 70       | 34,6                             | 851         | 24,7       | 424         |      | 1209   |
| _SFV 01000_ | 3 (21,3)        | 3000 (2,1) | 80       | 79,0                             | 1940        | 64,0       | 1100        | 29,1 | 1,9 (13,5)      | 3000 (1,4) | 80       | 53,6                             | 1316        | 43,4       | 746         | 11,2 | 1509   |
|             |                 |            | 70       | 62,9                             | 1545        | 45,7       | 787         |      |                 |            | 70       | 42,5                             | 1045        | 30,6       | 526         |      | 1478   |
| _SFV 01500_ | 3,7 (26,3)      | 4000 (4,6) | 80       | 98,6                             | 2422        | 80,3       | 1381        | 36,5 | 2,3 (16,3)      | 4000 (2,8) | 80       | 65,5                             | 1610        | 52,9       | 910         | 15,5 | 2193   |
|             |                 |            | 70       | 78,4                             | 1927        | 57,3       | 986         |      |                 |            | 70       | 52,6                             | 1292        | 37,6       | 646         |      | 2161   |
| _SFV 02000_ | 4,8 (34,1)      | 4000 (5,9) | 80       | 120,2                            | 2952        | 98,6       | 1697        | 51,0 | 3 (21,3)        | 4000 (3,7) | 80       | 82,7                             | 2033        | 66,8       | 1149        | 20,8 | 2862   |
|             |                 |            | 70       | 97,0                             | 2385        | 71,4       | 1229        |      |                 |            | 70       | 65,8                             | 1616        | 47,6       | 818         |      | 2834   |

\* Efficiency coefficient NL (DIN 4708)

For the purposes of the Directive (ErP) 2009/125/EC Regulation N° 812/2013 and N° 814/2013 the results of the energy measurements are given on page 218



| Model       | Dimensions (mm) |      |          |      | Exchanger (Sq.m.) |       | Weight DSFV (Kg) |
|-------------|-----------------|------|----------|------|-------------------|-------|------------------|
|             | Ø               | H    | Ø Ext ** | R*   | Lower             | Upper |                  |
| SFV 00150R  | 450             | 1065 | 550      | 1210 | 0,85              | -     | 54               |
| _SFV 00200R | 450             | 1320 | 550      | 1440 | 0,90              | 0,50  | 70               |
| _SFV 00300R | 500             | 1610 | 600      | 1730 | 1,30              | 0,85  | 93               |
| _SFV 00400R | 650             | 1410 | 750      | 1610 | 1,60              | 0,90  | 109              |
| _SFV 00500R | 650             | 1660 | 750      | 1835 | 1,95              | 1,10  | 125              |
| _SFV 00800_ | 790             | 1750 | 990      | 1745 | 2,70              | 1,50  | 195              |
| _SFV 01000_ | 790             | 2110 | 990      | 2095 | 3,00              | 1,90  | 229              |
| _SFV 01500_ | 1000            | 2115 | 1200     | 2145 | 3,70              | 2,30  | 351              |
| _SFV 02000_ | 1100            | 2435 | 1300     | 2465 | 4,80              | 3,00  | 488              |

\* For capacities from 150 to 500 Lt diagonal of rollover refers to the insulated tank

\*\* All insulations are removable except for models from 150 to 500Lt

| Model       | Dimensions (mm) |     |     |     |      |      |      |      |      |      |      |      | Connections (gas) |    |      |       |      |       |       |         |   |
|-------------|-----------------|-----|-----|-----|------|------|------|------|------|------|------|------|-------------------|----|------|-------|------|-------|-------|---------|---|
|             | A               | B   | C   | D   | E    | F    | G    | I    | L    | M    | N    | O    | a                 | dg | xy   | e     | i    | r     | u     | w       | q |
| SFV 00150R  | 110             | 190 | 260 | 300 | 530  | 560  | -    | -    | 730  | -    | 730  | 840  | 1"1/4             | 1" | 1/2" | 1"    | 1/2" | 1"1/4 | 1"1/2 | 120/180 |   |
| _SFV 00200R | 110             | 190 | 260 | 340 | 630  | 690  | 740  | 850  | 840  | 950  | 980  | 1090 | 1"1/4             | 1" | 1/2" | 1"    | 1/2" | 1"1/4 | 1"1/2 | 120/180 |   |
| _SFV 00300R | 120             | 230 | 300 | 405 | 790  | 845  | 900  | 1050 | 1050 | 1200 | 1250 | 1365 | 1"1/4             | 1" | 1/2" | 1"    | 1/2" | 1"1/4 | 1"1/2 | 120/180 |   |
| _SFV 00400R | 145             | 240 | 310 | 375 | 690  | 745  | 800  | 900  | 900  | 1000 | 1030 | 1140 | 1"1/4             | 1" | 1/2" | 1"    | 1/2" | 1"1/4 | 1"1/2 | 120/180 |   |
| _SFV 00500R | 145             | 240 | 310 | 395 | 840  | 895  | 950  | 1095 | 1095 | 1250 | 1280 | 1390 | 1"1/4             | 1" | 1/2" | 1"    | 1/2" | 1"1/4 | 1"1/2 | 120/180 |   |
| _SFV 00800_ | 150             | 275 | 345 | 425 | 870  | 940  | 1010 | 1095 | 1200 | 1385 | 1250 | 1425 | 1"1/4             | 1" | 1/2" | 1"1/2 | 1"   | 1"1/2 | 1"1/2 | 120/180 |   |
| _SFV 01000_ | 150             | 275 | 345 | 430 | 1020 | 1090 | 1160 | 1280 | 1400 | 1635 | 1450 | 1770 | 1"1/4             | 1" | 1/2" | 1"1/2 | 1"   | 1"1/2 | 1"1/2 | 120/180 |   |
| _SFV 01500_ | 230             | 375 | 475 | 530 | 1110 | 1180 | 1250 | 1345 | 1460 | 1675 | 1490 | 1740 | 1"1/4             | 1" | 1/2" | 2"    | 1"   | 2"    | 1"1/2 | 220/290 |   |
| _SFV 02000_ | 255             | 385 | 505 | 540 | 1270 | 1340 | 1410 | 1545 | 1675 | 1935 | 1750 | 1955 | 1"1/4             | 1" | 1/2" | 2"    | 1"   | 2"    | 1"1/2 | 220/290 |   |